



**It may be only a small symbol,
but it means a lot.**

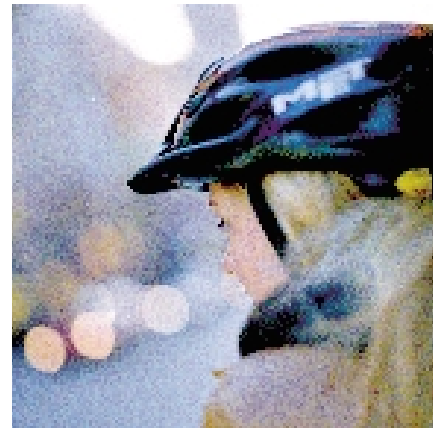


Water is our most important element of life support. Accredited laboratories analyse the quality of our drinking water.

There are many suppliers to choose from when you are looking for companies to perform testing, analysis, calibration, certification or inspection. How do you know that you can rely on their results?

At first glance, it may seem difficult to evaluate them, but it need not be so hard. There is the accreditation system to help you. Accreditation guarantees that all aspects of any tests or inspections or similar work are impartial, and based on internationally recognised standards.

Sweden's representative in this worldwide system is the public authority, swedac, the Swedish Board for Accreditation and Conformity Assessment. We accredit laboratories, certification bodies and inspection bodies: this means that we make sure that they have the appropriate competence as needed to perform their work. All bodies accredited by us are allowed to display our accreditation mark, as a confirmation of quality upon which you can rely. Tests, analyses, calibrations, certifications and inspections performed by accredited companies create confidence. When all is said and done, we need to be able to rely on so many things that we take for granted: for example, that the water that we drink is pure, that blood samples have been correctly analysed or that the lifts we use are safe.



Products are tested and certified with the overall objective of making sure that our everyday lives are safe.



Are you getting the amount that you paid for? SWEDAC assesses companies that, in turn, check that weighing instruments are accurate.

WHAT IS ACCREDITATION?

Accreditation involves assessment of competence to perform a task. This assessment is carried out in accordance with European and international standards.

Accreditation means that swedac recurrently checks to ensure that the company or organisation concerned is competent to perform the tests, analyses, calibrations, certifications or inspections for which it is accredited. (Certification is an independent assessment of compliance with certain requirements, e.g. with standards.)

Accreditation in other countries is performed by national bodies corresponding to swedac.

The reports, certificates and other documents issued under accreditation are recognised in Europe and in many other countries in the world. This facilitates trade across national borders, and guarantees that the results shown on the documents do not need to be retested in other countries. It also means that test results etc. from different companies are genuinely comparable.

ACCREDITATION - WHY?

Accreditation sets a level for the quality of the work performed by an organisation. It imposes requirements on the organisation's quality system and on its competence. Documentation is inspected, and the work of the organisation is assessed at site. This ensures good order in the business and minimises the risk of errors. An accredited business can show proof of its competence, acceptable both in Sweden and internationally.

Accreditation sets a level of quality that facilitates comparison by those purchasing services from laboratories, certification bodies or inspection bodies. Employing the services of an accredited organisation is also the best way of ensuring reliable results.



Medical laboratories analyse tens of thousands of samples each day. The patient, the doctor and the purchaser of the laboratories' services must be able to rely on samples being correctly handled.



Furniture must meet requirements in respect of function and safety. There are hundreds of methods that are used to assess how these requirements are fulfilled.

WHO CAN BE ACCREDITED?

swedac accredits private and public companies and organisations in Sweden and in other countries. Laboratories, certification bodies and inspection bodies are accredited in accordance with international iso standards and European en standards. swedac also assesses laboratories in accordance with the oecd glp rules (Good Laboratory Practice) and the gep rules (Good Efficacy Practice).

swedac's duties are constantly expanding, with new working areas appearing in which companies must be accredited. This can apply, for example, to the safety of products, or to the security of information management or of electronic signatures.

Laboratories perform their work in many areas:

- Materials testing
- Calibration in the fields of mechanics, electricity, magnetism, photometry and radiometry, time, frequency, heat and ionising radiation
- Sound measurement
- Radiation measurement
- Electricity and electronics
- Microbiological analyses (foodstuffs)
- Chemical analyses (including environmental analyses)
- Medical analyses
- Etc.

Certification bodies perform certification of:

- Management systems for quality, environment, information security, occupational health and safety
- Personnel of various categories, e.g. welders, national quality inspectors in the building industry, national performance inspectors in the ventilation sector, environmental auditors, refrigeration and heat pump technicians, non-destructive testing personnel, power station operators etc.
- Products that must meet various statutory requirements, e.g. directives or voluntary requirements, e.g. in standards.

Inspection bodies perform inspection of:

- Pressure vessels
- Hazardous goods
- Heat and water meters
- Foodstuffs

- Own repairs by vehicle workshops, automotive air-conditioning equipment, tachographs, taximeters
- Non-destructive testing
- Strength
- Nuclear power plants
- Lifting equipment
- Construction products
- Refrigeration and air-conditioning equipment
- Non-pressurised tanks
- Gas bottles
- Lifts
- Weighing instruments
- Precious metal assaying
- Etc.

USE THE SERVICES OF ACCREDITED COMPANIES

This is your guarantee of reliable results. swedac maintains a directory of all accredited companies and can provide information on which companies or organisations are accredited for testing, calibration, certification or inspection. It is only these companies that may display swedac's accreditation mark.

So far, swedac has accredited over 500 laboratories, about 30 certification companies and almost 2,000 inspection bodies, in Sweden and in other countries.

DO YOU WANT TO ACCREDIT YOUR COMPANY?

Accreditation can give your company a number of benefits. It increases the confidence of your customers and improves your competitiveness. In many cases, accreditation is a statutory requirement in order to be able to supply certain goods or services. Contact swedac for further information.

APPOINTMENT AS A NOTIFIED BODY

Notified Bodies are authorised to perform testing, certification and conformity assessment in accordance with the requirements of various ec directives. Companies appointed as Notified Bodies must be independent, and their competence must be assessed in a manner equivalent to that of accreditation.



Accreditation is required for inspection of refrigeration equipment. This is essential in order to ensure safety and to protect the environment.

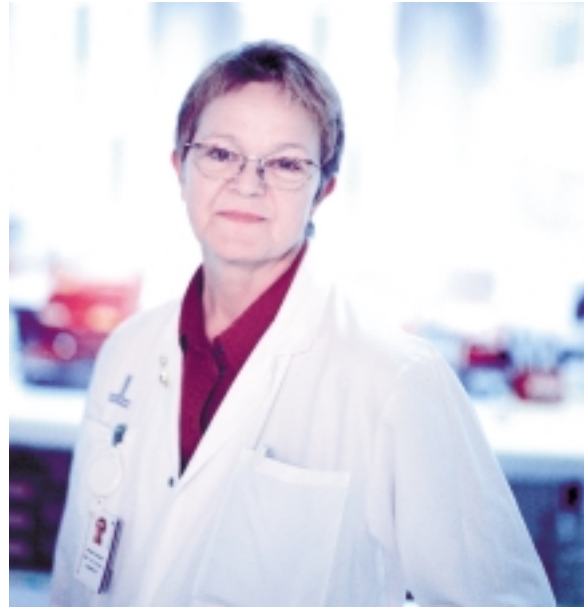


**Carl-Johan Börjesson,
DNV Nuclear Technology AB**

dnv Nuclear Technology is accredited by swedac for inspection of nuclear power plants. The company inspects the Swedish nuclear power plants, and is also involved in such areas as projects aiming to improve the safety of nuclear power plants in the Central and Eastern European states.

Inspection applies to mechanical equipment such as piping systems and pressure vessels, as well as to parts of the computerised safety systems. Requirements relating to equipment in nuclear power stations are extremely rigorous, as the equipment must be able to withstand all foreseeable effects, such as earthquakes.

– swedac’s accreditation has been a great help in the work of drawing up our instructions, says Carl-Johan Börjesson, department manager at dnv Nuclear Technology.



**Kerstin Karlsson,
Huddinge University Hospital**

Stockholm County Council requires laboratories from which it purchases services to be accredited. One of the larger laboratories is the Clinical Bacteriological Laboratory at the Huddinge University Hospital. It has about 80 employees, and analyses several hundred thousand samples each year. Accreditation means, for example, that all the methods used for analyses are documented, and that all work relating to the samples is documented, dated and initialled.

– It’s easier to prevent faults nowadays, says Kerstin Karlsson, who is the laboratory’s quality manager. And if a mistake should be made, we can trace it. We also avoid gradual involuntary changes in our working methods.



**Magnus Björk,
IKEA Test Lab**

ikea Test Lab in Älmhult is one of the world's largest furniture laboratories, carrying out thousands of tests each year. Its duties are to check that new and upgraded furniture and textiles fulfil the requirements set out in various international standards.

The tests vary from simpler tests of the stain resistance of textiles to complete tests of, for example, a sofa, which can take three weeks to perform.

– We can't meet all ikea's requirements: we have to purchase some services from other laboratories. However, the accreditation requirement applies both to us and to the external laboratories, says Magnus Björk, of ikea Test Lab. The major benefit for us is the orderliness brought about by accreditation, which creates the right conditions for efficiency and job satisfaction. It's also a confirmation that we are carrying out our tests in the right way.



**Curt Henricson,
ABB Sustainability Affairs**

– We employ the services only of accredited certification bodies for certification of environmental and quality systems in order to ensure that all certifications are internationally comparable. This applies also for certification of environmental product declarations (epd), says Curt Henricson, who is a member of the group headquarters staff of abb Sustainability Affairs. The job of the company is to assist other abb companies to introduce iso 14001 and emas environmental management systems, and to develop life cycle assessment procedures for the environmental product declarations that abb now produces for all its core products.



0000
ISO/IEC 17020

SWEDAC has been established by the Government to act as Sweden's accreditation body. The accreditation mark displays the three crowns from Sweden's coat of arms, and accredited companies use it on reports, certificates and similar documents. Each company's unique accreditation number is shown beneath the symbol, together with the standard against which it has been accredited.

WHAT DOES SWEDAC DO?

swedac is a public authority and Sweden's accreditation body. We are also extensively involved in international work on matters relating to conformity assessment. We are Sweden's signatory in agreements with other countries, providing recognition of each other's accreditations, and thus of the work performed under accreditation.

swedac is also the public authority that publishes regulations and exercises surveillance in the field of legal metrology. This means that we ensure that the regulations are complied with in respect of weighing instruments used in retail trade, pre-packaged goods sold by volume or weight and meters for liquids other than water, e.g. petrol pumps.

swedac publishes regulations and exercises surveillance in the field of precious metals. It is our duty to ensure that the regulations in respect of fineness and assaying of gold, silver and platinum are followed. swedac also maintains a register of hallmarks as used for precious metals.

swedac also exercises surveillance of the the Swedish Motor Vehicle Inspection.

swedac is responsible for coordinating market surveillance in Sweden. About a score of public authorities are required to carry out inspections to ensure that goods sold on the Swedish market - whether manufactured in Sweden or imported - meet the requirements in respect (primarily) of safety and function.

swedac is required to assess and exercise surveillance of Notified Bodies, i.e. those that perform testing, certification or inspection as required by, and in accordance with, e c directives.

swedac's own competence is often employed for international work, such as support projects aimed at establishing accreditation activities in other countries.

swedac is managed by a Board and a Director-General, all of whom are appointed by the Government. It has about 90 employees, and its headquarters are in Borås. There is also an office in Stockholm.

Further information on our activities can be found on our website, www.swedac.se.



SWEDAC's personnel assess whether a company has the necessary competence to perform testing, calibration, certification or inspection. Some of this assessment work is performed at site. Accredited vehicle workshops may install tachographs in vehicles. They may also certify that they have corrected certain minor defects pointed out by the Swedish Motor Vehicle Inspection in connection with annual vehicle inspections. This means that vehicle owners do not have to return to the Swedish Motor Vehicle Inspection after having the defects put right.

SWEDAC

Styrelsen för ackreditering och teknisk kontroll
Swedish Board for Accreditation and Conformity Assessment

HEAD OFFICE
Box 878, Österlånggatan 5
se-501 15 Borås
tel +46 33 17 77 00
fax +46 33 10 13 92

STOCKHOLM OFFICE
Box 2231, Slussplan 9
se-103 15 Stockholm
tel +46 8 406 83 00
fax +46 8 791 89 29

registrator@swedac.se

www.swedac.se